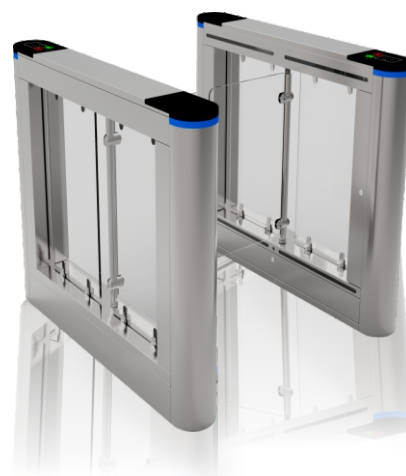


Realtime A306



Specifications

» Product size	1200*210*1000mm
» Material structure	304 stainless steel, toughened glass, acrylic
» Channel width	600-900mm
» Outer box	1.5mm
» Driving motor	DC 24V brushless motor, no noise
» Direction of traffic	one-way traffic/two-way traffic; speed: 35-40 people/minute
» Opening mode	ID/IC card reader verification, infrared induction automatic opening, button opening, etc.
» Switch-on Signal	Dry Contact Signal
» Protection function	encoder limit, electromechanical anti-collision, infrared anti-pinch, illegal intrusion infrared alarm
» Life	9 million times;
» Power	40-60W
» Applicable temperature	- 20-75 C

Advantage :

1. SUS304 Stainless Steel Wire Drawing
2. Angle collision avoidance;
3. Current anti-clamping;
4. With voice prompt function;
5. Infrared alarm for illegal intrusion;
6. Reverse alarm when switching on the card and opening the brake;
7. Digital positioning and collision avoidance design of encoder
8. Encoder adopts imported electrical components, which has better shock resistance, vibration resistance and stability of output pulse signal.
9. Domestic first-line brand motor
10. Domestic first-line brand infrared, high light resistance: limit light resistance 100,000 LUX, light resistance angle 6 C



Fingerprint Scanner (Optional)



RFID Reader



TCP/IP