

# Realtime T2DF, T4DF



T2DF



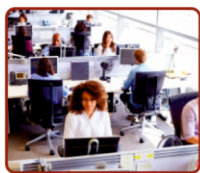
T4DF



## Specifications

» Power	12V>100mA	12V>100mA
» Device Size	160*130mm	160*130mm
» Communication	TCP/IP	TCP/IP
» Fingerprint	5000	5000
» Card	5000	5000
» Doors	2	4
» Fingerprint Reader	4	4
» Exit	2	4
» Wiegand	Sole Factory Deal	Sole Factory Deal
» Distance	100 meters	100 meters
» Humidity	40%---70%	40%---70%
» Temperature	10°C--90°C	10°C--90°C
» Alarm	Defend, Unlock and Threaten	Defend, Unlock and Threaten
» Database	Access and SQL	Access and SQL

### APPLICABLE



OFFICE



COLLAGE



SERVER ROOM



HOSPITAL



PARKING



LAB